

“Environmental variables and gene expression profiles associated with cueing reproductive events in cnidarians”

Camerron Crowder

Weis lab, department of Integrative Biology, OSU

Wednesday
May 11th
10:00 A.M.
ALS 4001

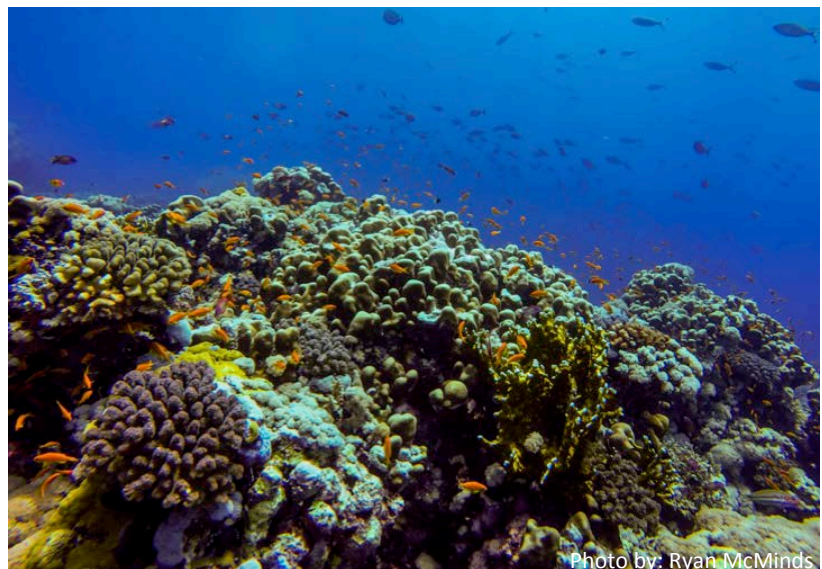


Photo by: Ryan McMinds

FREE & OPEN TO THE PUBLIC

This is in partial fulfillment of the requirements for the degree of
Doctor of Philosophy in Zoology

Refreshments available prior to seminar.

For accommodation related to a disability, please call 541-737-2993 at
least one week prior to seminar.