

# “Influence of river plumes on larval fish distributions, predator-prey relationships, & survival in the northern Gulf of Mexico”

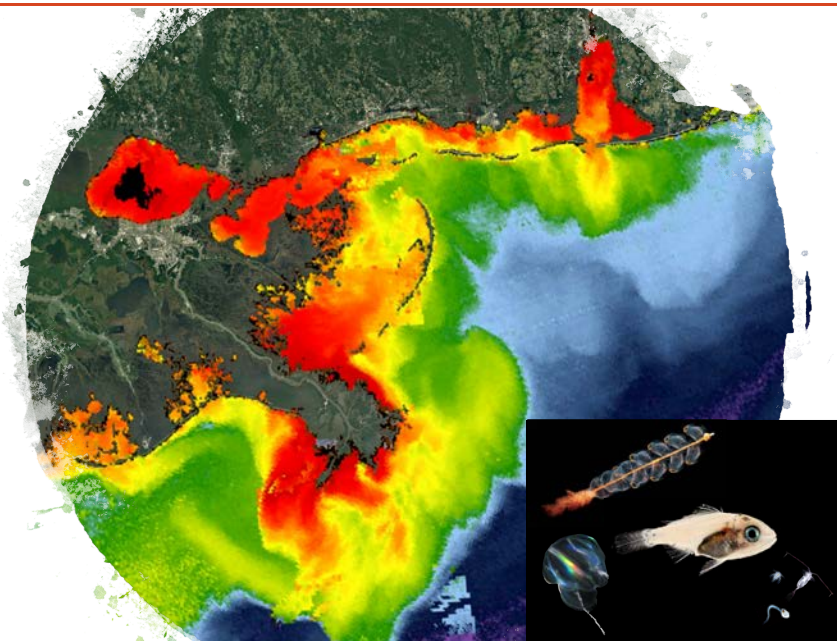
Kelia E. Axler

---

Advisor: Su Sponaugle

**Tuesday  
June 11, 2019  
10 A.M.**

**Guin Library  
Seminar Room  
(HMSC)**



Streamed online: <http://oregonstate.adobeconnect.com/hmscdefense/ib.oregonstate.edu>

**FREE & OPEN TO THE PUBLIC**

This is in partial fulfillment of the requirements for the degree of  
Master of Science in Integrative Biology

Refreshments available prior to seminar.

For accommodation related to a disability, please call 541-737-2993 at least one week prior to seminar.