

PHENOTYPIC EVOLUTION OF SKULLS IN TROPICAL ANURANS AND LIZARDS

DR. MONIQUE SIMON
POSTDOCTORAL RESEARCHER, OREGON STATE

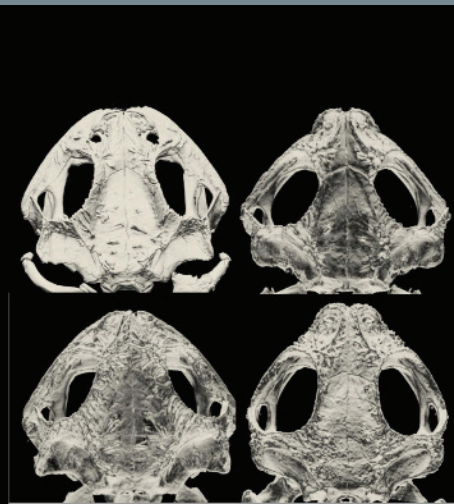
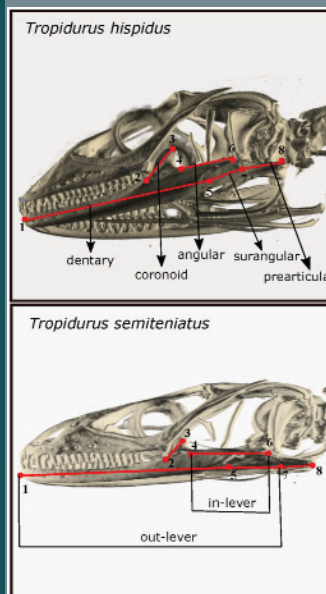
DR. SIMON IS A POSTDOCTORAL SCHOLAR AND RESEARCHER WITH THE **ARNOLD LAB** IN THE **DEPARTMENT OF INTEGRATIVE BIOLOGY**. HER FOCUS IS ON COMPLEX PHENOTYPES, COMPOSED OF SEVERAL TRAITS, AND HOW THEY ARE SHAPED BY AND RESPOND TO NATURAL SELECTION. **DR. SIMON'S** TALK WILL HIGHLIGHT RESULTS RELATED TO EVOLUTIONARY CONSTRAINTS, MORPHOLOGICAL MODULARITY AND MULTIVARIATE STABILIZING SELECTION.

MONDAY, APRIL 16

3:30 P.M.

ALS 4001

FREE & OPEN TO THE PUBLIC



Oregon State
University

Accommodations for disabilities may be made by contacting 541-737-2993 or ib@oregonstate.edu.